

PIONEERED BY THE
ROCKEFELLER FOUNDATION

100 RESILIENT CITIES

Olivia Stinson – Associate Director, North America
Sommet 2017 sur la culture philanthropique
Institut Mallet
November 14, 2017
Montréal



@olivia_dawa
ostinson@100rc.org

Urban Resilience is the capacity of individuals, communities, institutions, businesses, and systems within a city to **survive, adapt, and grow** no matter what kinds of **chronic stresses** and **acute shocks** they experience.

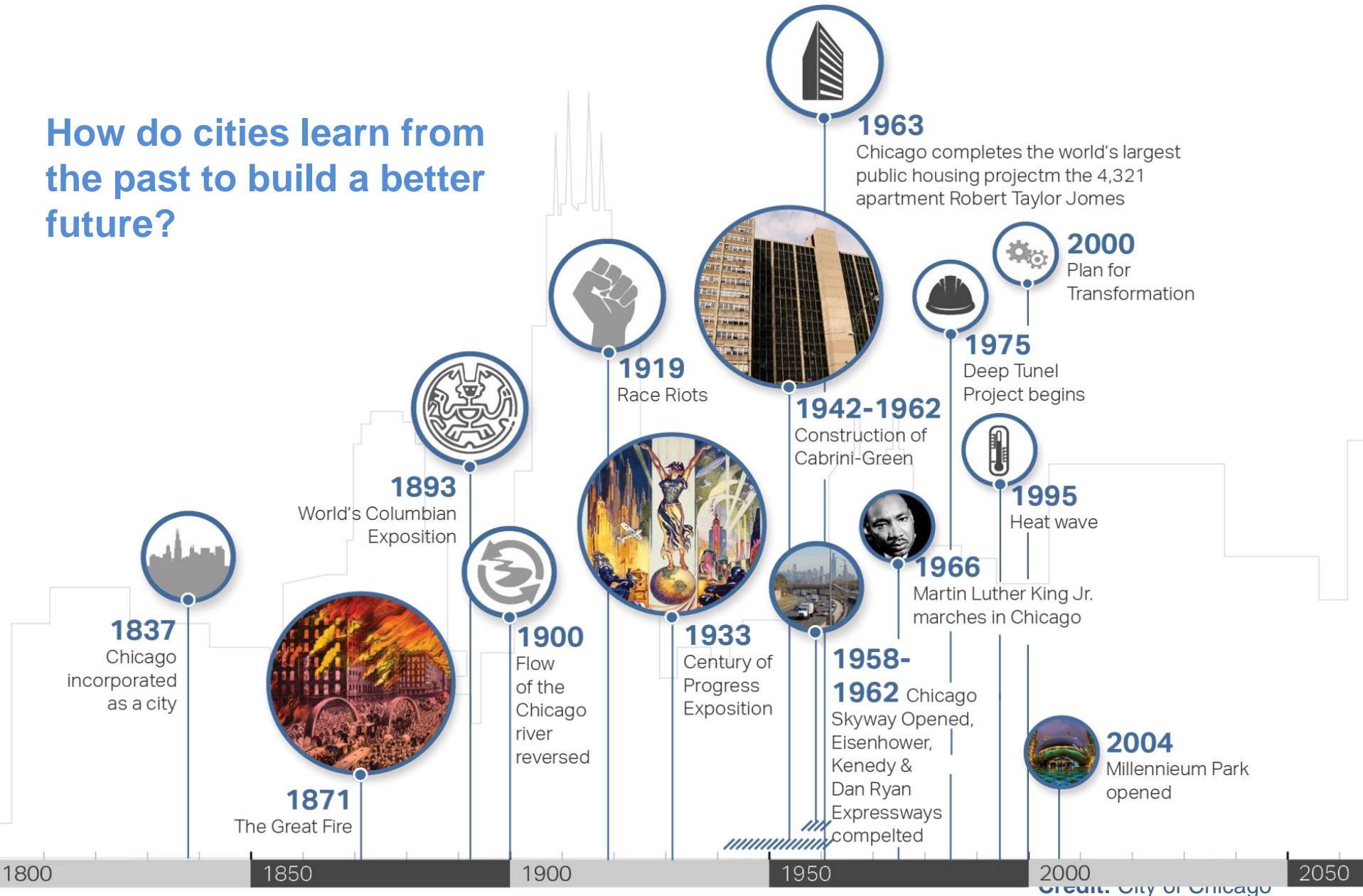
An aerial photograph of Chicago, Illinois, showing the city's skyline and urban layout. The word "CHICAGO" is overlaid in large, bold, blue capital letters across the center of the image. The skyline features prominent skyscrapers like the Willis Tower (1330 North Dearborn Street) and the Trump Tower (400 North Dearborn Street). The city is divided by major thoroughfares, including the Lake Shore Drive (606 North Dearborn Street) and the Dan Ryan Expressway (I-55). The image captures the dense urban environment, green spaces, and the proximity to Lake Michigan. The word "CHICAGO" is centered horizontally and vertically, with a bounding box of approximately [138, 470, 796, 608].

CHICAGO

**Chicago has always been a
resilient city...**

...with a long history of transformation.

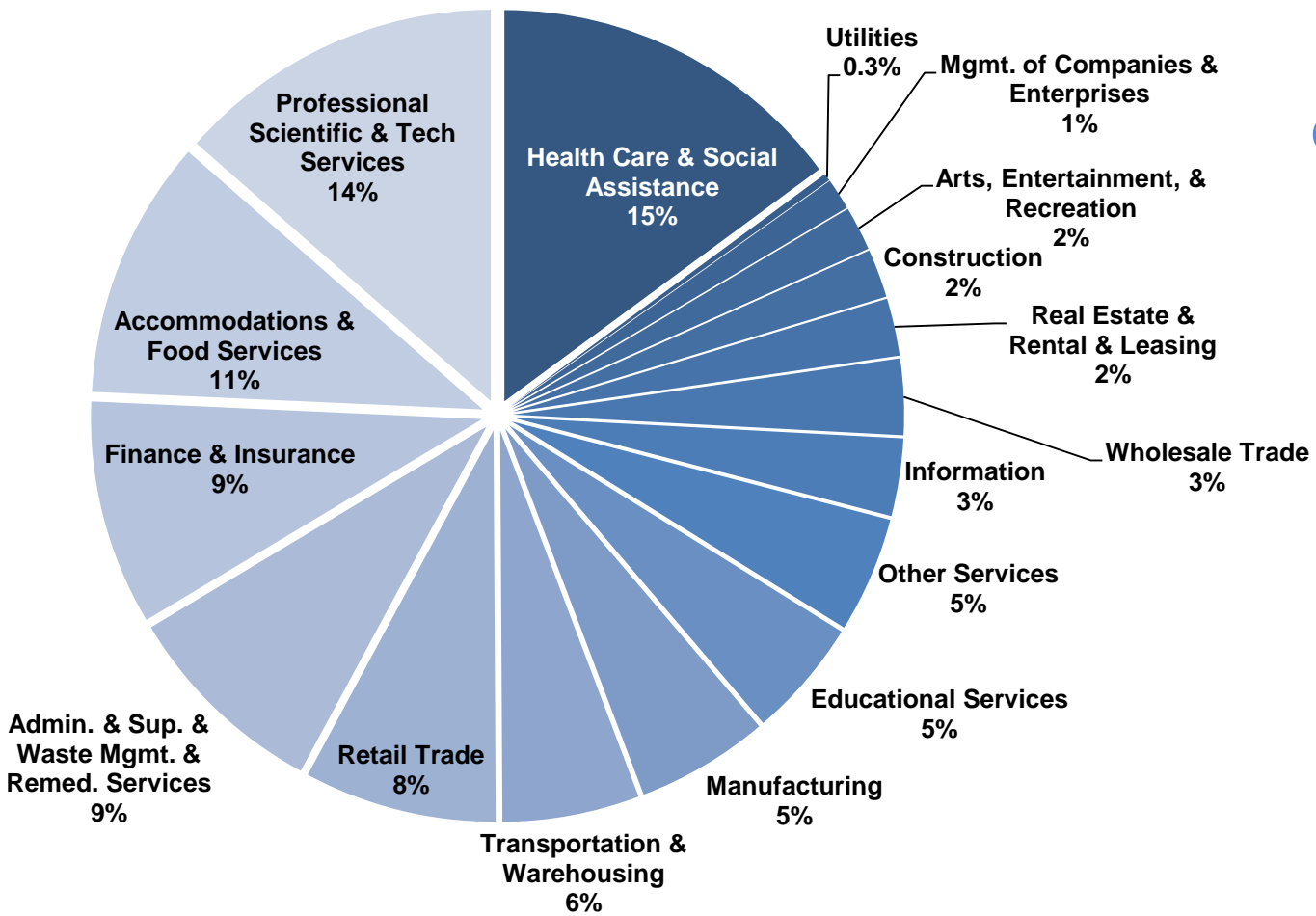
How do cities learn from the past to build a better future?



**Chicago is a great city with
tremendous assets...**

Chicago is one of the most diversified urban economies in the United States...

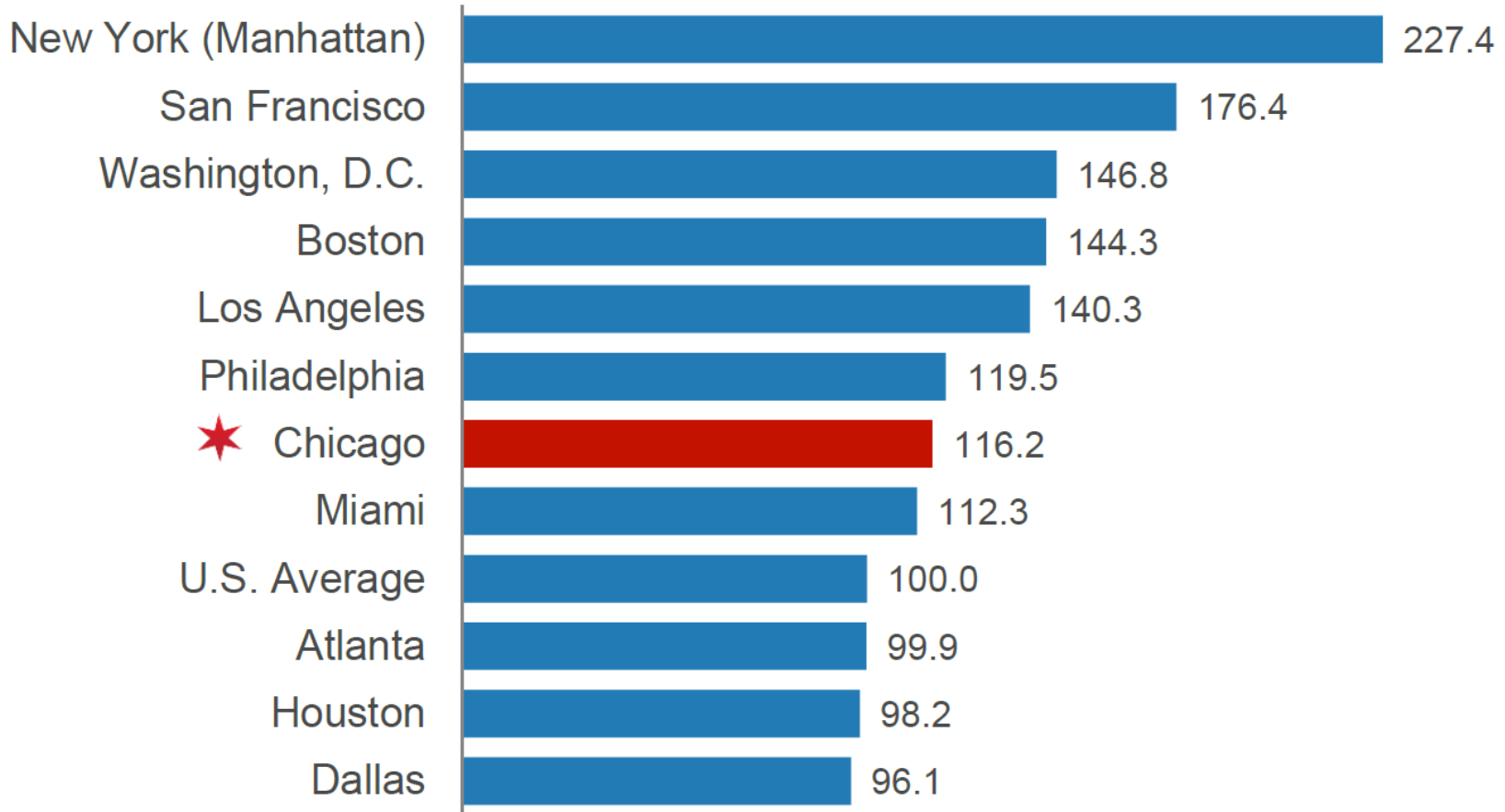
City of Chicago Economic Activity by Industry



No single industry employs more than **15%** of the city's workforce

...with a low cost of living compared to peer U.S. cities.

Annual Cost of Living Index, 2015

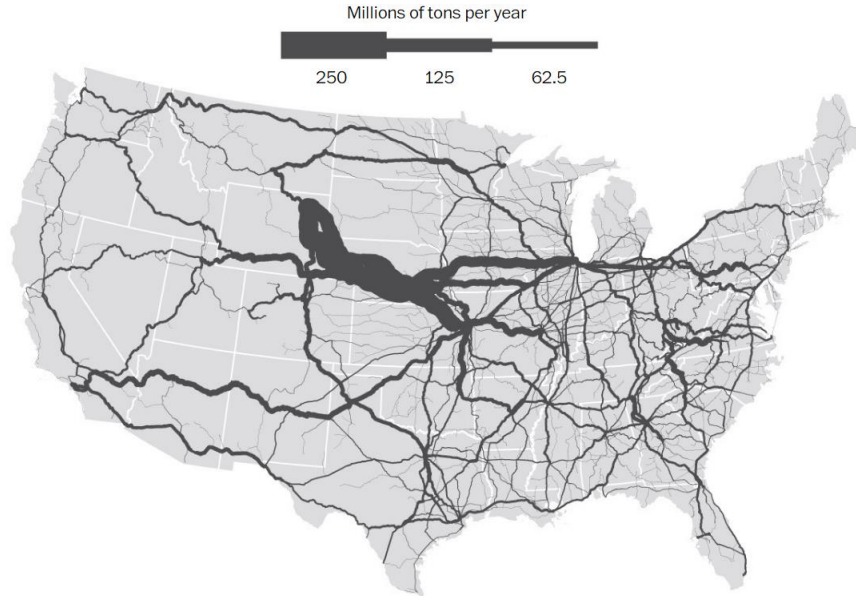


Note: all figures are for the primary urbanized area within each MSA

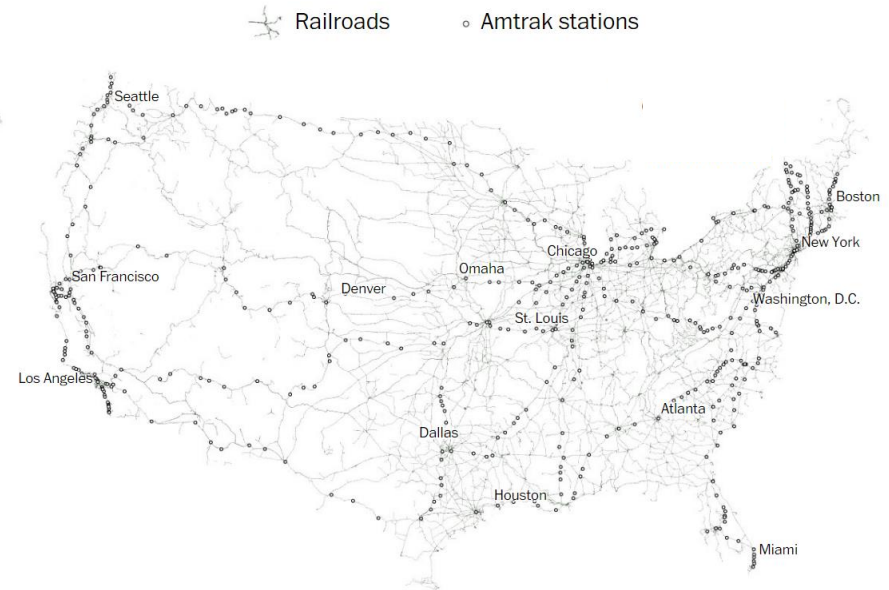
Chicago is centrally located and the crossroads for U.S. transportation infrastructure.

Chicago is a hub for six of the nation's seven Class I North American railroads, six major U.S. Interstates, and one of the world's busiest airports.

Rail Freight Tonnage



Railroads and Amtrak Stations



Source: World Business Chicago; Washington Post, “Six Maps that show the Anatomy of America’s Vast Infrastructure,” December 1, 2016.

Chicago graduates over 158,000 graduates annually from more than 130 colleges and universities.

More than 508,000 people with bachelor's degrees or greater live in the City of Chicago and more than 502,000 college students are enrolled in the Chicago metropolitan area.



Source: World Business Chicago for data on graduates and degree holders. Citylab for data on current students - <http://www.citylab.com/housing/2016/09/americas-biggest-college-towns/498755/>

Chicago is home to many world-class corporations.

Chicago is home to more than 400 major corporate headquarters, including 31 in the Fortune 500

HYATT

KraftHeinz

DURACELL®



UNITED



MOTOROLA MOBILITY

GRUBHUB

BMO



Harris Bank

Leo Burnett



RADIO FLYER

MARS
WRIGLEY

Wilson



MORTON SALT



Exelon®



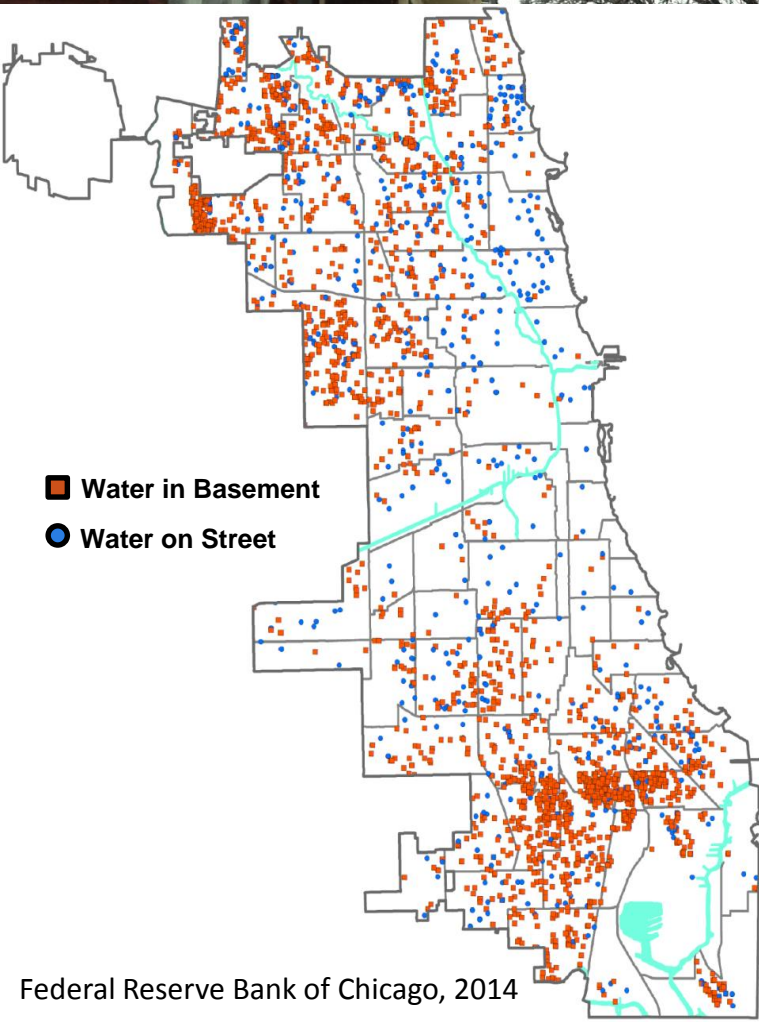
Chicago contains many renowned cultural institutions and events.

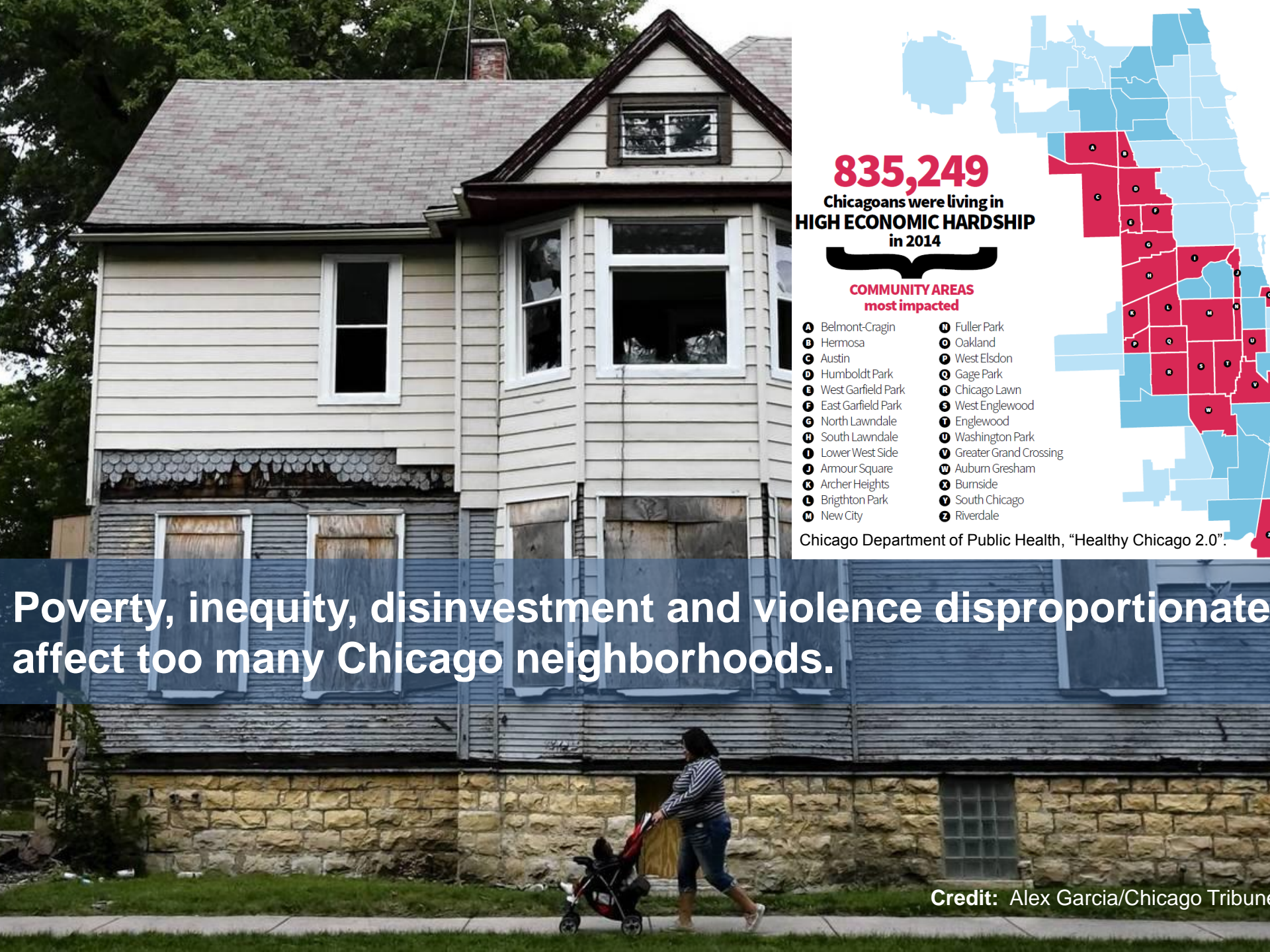
Hundreds of institutions shape the cultural and economic life of Chicago



**However, potential threats make
Chicago's future uncertain.**

Chicago has already experienced climate change impacts, and risks will grow into the future.





835,249
Chicagoans were living in
HIGH ECONOMIC HARDSHIP
in 2014

**COMMUNITY AREAS
most impacted**

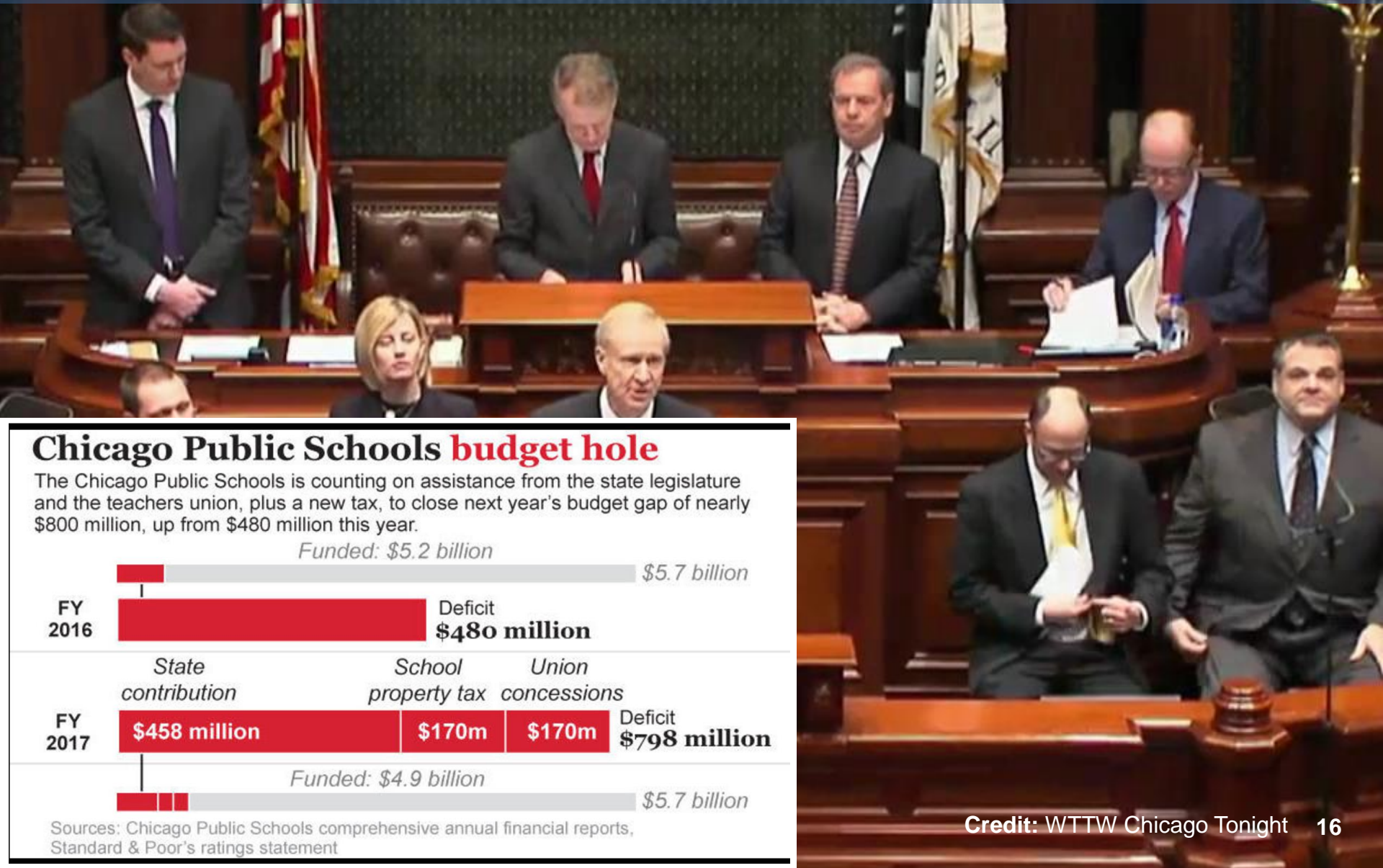
- | | |
|-----------------------------|---------------------------------|
| A Belmont-Cragin | N Fuller Park |
| B Hermosa | O Oakland |
| C Austin | P West Elsdon |
| D Humboldt Park | Q Gage Park |
| E West Garfield Park | R Chicago Lawn |
| F East Garfield Park | S West Englewood |
| G North Lawndale | T Englewood |
| H South Lawndale | U Washington Park |
| I Lower West Side | V Greater Grand Crossing |
| J Armour Square | W Auburn Gresham |
| K Archer Heights | X Burnside |
| L Brighton Park | Y South Chicago |
| M New City | Z Riverdale |

Chicago Department of Public Health, "Healthy Chicago 2.0".

Poverty, inequity, disinvestment and violence disproportionately affect too many Chicago neighborhoods.

Credit: Alex Garcia/Chicago Tribune

Uncertainty at the State government impact social services provision, like education.



Chicago Public Schools **budget hole**

The Chicago Public Schools is counting on assistance from the state legislature and the teachers union, plus a new tax, to close next year's budget gap of nearly \$800 million, up from \$480 million this year.

Funded: \$5.2 billion

FY
2016



State
contribution

School
property tax

Union
concessions

FY
2017

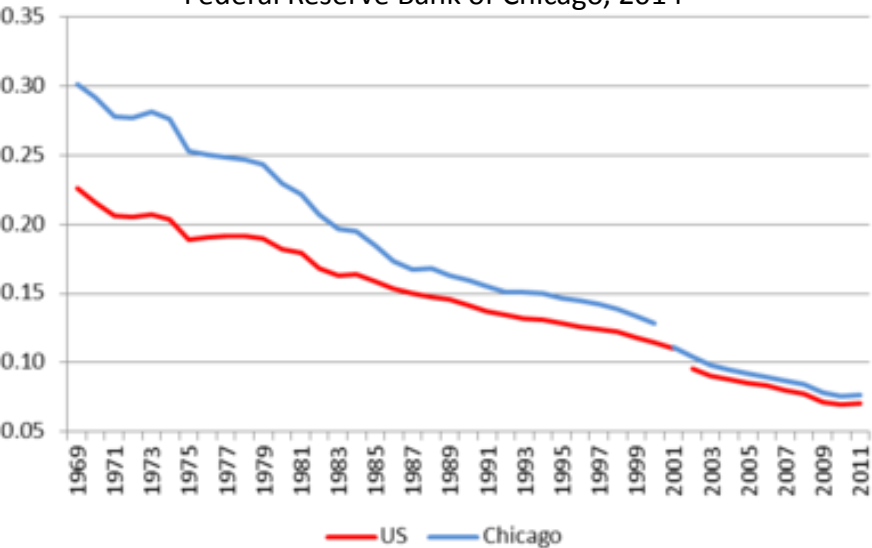


Sources: Chicago Public Schools comprehensive annual financial reports,
Standard & Poor's ratings statement

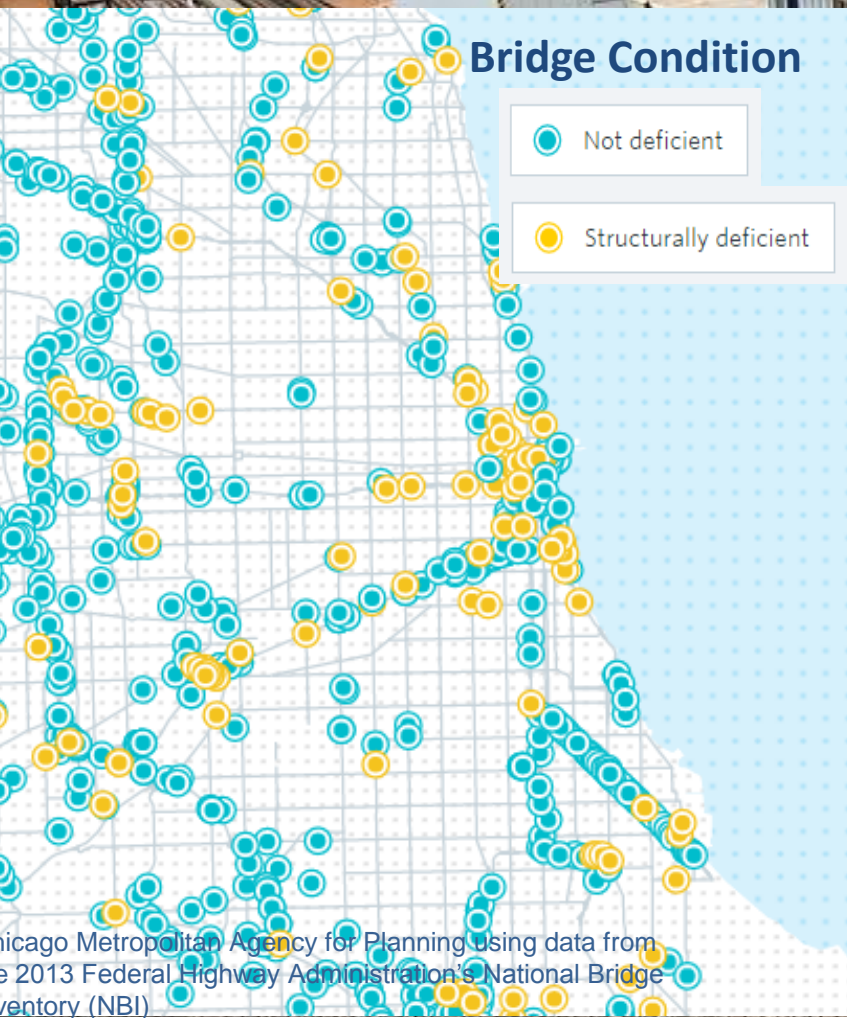
...and automation is a potential shock to key industries and employment sectors.

Manufacturing Share of Total Jobs – U.S. vs Chicago MSA

Federal Reserve Bank of Chicago, 2014



Aging infrastructure will require significant investment in the near future.



Chicago Metropolitan Agency for Planning using data from the 2013 Federal Highway Administration's National Bridge Inventory (NBI)



By I, Daniel Schwen, CC BY-SA 3.0, <https://commons.wikimedia.org/w/index.php?cu>

The Trump Administration is upending Federal policy that supports cities.



DOJ Warning

SANCTUARY CITIES



- Chicago & Cook County Given 2 Weeks
- Must Comply With Federal Law
- Sanctuary Cities Will Lose Federal Grant Money If Not In Compliance

October 13, 2017

6:36 55°



**The Resilience Strategy
will support a
Connected Chicago.**

A resilient Chicago is a city where residents, neighborhoods, institutions, corporations, and government agencies are successfully connected to themselves and to each other in the pursuit of economic opportunity, safety, security, and sustainability for all.



A Connected Chicago is a city with:



**Citizens
connected
to opportunity**



**Neighbors
connected to
each other**



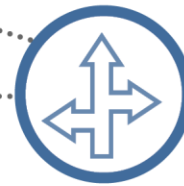
**Communities
Connected to
other
communities**



**Government
connected to
citizens**



**City
government
connected to
itself**



**Regional
governments
connected &
working
together**



**Communities
connected to
the region and
nature**

The next phase of our analysis will focus on three specific topics.



Strong Neighborhoods

How do we ensure every resident in every neighborhood has the access and opportunity to participate in the economic future of Chicago?



Robust Infrastructure

How can we connect City infrastructure investments to strategies that create economic opportunity for all Chicagoans and enhance vulnerable communities?



Prepared Communities

How do we ensure that Chicagoans are engaged and informed so that they are prepared for all threats they face now and in the future?

Resilience is built through capacity-building and coordination of:

- **Municipal leadership**
- **Community Engagement**
 - **Strong Partnerships**
 - **Engaged Institutions**

Recent plans and actions are addressing Mayor Emanuel's key priorities for Chicago.

"In shaping [Chicago's] future, our children, and their schools, must come first..... Second, we must make our streets safer..... Third, we must put the city of Chicago's financial house in order, because we cannot do any of these things if we squander the resources they require..... Finally, we need to make Chicago the best place in America to start a business, create good jobs, and gain the knowledge and skills to fill the jobs of tomorrow."

- Mayor Rahm Emanuel



Philanthropic organizations support local impact initiatives.

BENEFIT CHICAGO

Benefit Chicago

The Chicago Community Trust, MacArthur and Calvert Foundation have partnered for a \$100 million program to spur impact investments for nonprofits and social enterprises in Chicago.

JPMORGAN CHASE & Co.

Turning \$40 million in grants from Chase to community groups will fund job training, small businesses expansion, neighborhood revitalization and personal financial health programs through a variety of community partners already working in Chicago.

TheJoyceFoundation

The Joyce Foundation works with grantee partners to develop and advance policy reforms that promise to improve quality of life, promote community vitality, and strive for a fair society. Our grant making is driven by a belief that communities are stronger when they share benefits broadly among their people. That requires our public systems to get a few essentials right



L-Evated Chicago is a partnership of organizations committed to transforming the half-mile radius around transit stations into hubs of opportunity and connection across our region's vast transit system. L-Evated Chicago views station areas optimal locations where arts and culture, urban design, social programming and development can converge in order to address the region's deeply rooted disparities in racial equity



Strong, Prosperous and Resilient Communities Challenge (SPARCC) The Chicago Community Trust, Enterprise Community Partners, NRDC, and MPC are partnering to develop a planning process around transit-oriented development, equity, resilience, and public health in vulnerable communities.

MacArthur Foundation

For nearly 40 years, the Foundation has been committed to Chicago, its people, its diverse neighborhoods, its strength and vitality. MacArthur has invested more in the Chicago region than in any other place around the world: \$1.2 billion in more than 1,500 organizations and individuals.

...in partnership with community-level initiatives and research.



Greater Chatham Initiative

This partnership of community leaders, the City, and World Business Chicago is designed to strengthen the communities of Chatham, Auburn Gresham, Greater Grand Crossing, and Avalon Park and set them on an upward path in the twenty-first century economy.

Reimagining the Civic Commons

Chicago Arts + Industry Commons advances an innovative approach to community development – a socially engaged neighborhood master implementation strategy. The goal is clustered and coordinated activity among a network of significant sites, enhancing public access and better integrating these places into the city.



Southwest Corridor Collaborative

LISC Chicago, in partnership with the Greater Auburn Gresham Development Corporation, Southwest Organizing Project and Teamwork Englewood have partnered to take a targeted and place-based approach to economic development with LISC making \$50 million available for targeted projects.



The Cost of Segregation

The Metropolitan Planning Council and Urban Institute are conducting a two-year study based on the hypothesis that by reducing segregation, Chicago and our region will experience faster economic growth and a more equitable quality of life.



The University of Chicago Urban Labs works to address challenges across five key dimensions of urban life: crime, education, health, poverty, and energy & environment. We partner with civic and community leaders to identify, test, and help scale the programs and policies with the greatest potential to improve human lives.

PIONEERED BY THE
ROCKEFELLER FOUNDATION

100

RESILIENT

CITIES

Merci Thank you



@olivia_dawa



ostinson@100rc.org